



# Welcome Guide

Product Code: MB-BSP-B1

For product FAQ or missing parts, please contact:  
[support@mbeat.com.au](mailto:support@mbeat.com.au)

### No sound from the speaker.

- The speaker is not connected to AC power or the battery is not charged. Connect power and turn on the speaker.
- The volume is too low or muted.
- There is no connected Bluetooth device. Pair and connect a Bluetooth device and try again.
- There is no connected AUX device. Connect an audio device to the AUX input using a stereo 3.5mm cable and make sure music is playing on your device.

### Sound is distorted, noisy, or cuts in and out.

- The Bluetooth device is out of range. Bring the Bluetooth device closer to the speaker.
- The Bluetooth connection is experiencing wireless interference. Move the speaker away from appliances such as microwave ovens and other wireless devices.
- The Bluetooth device is having connectivity issues. Cycle the power on the device and reconnect to the speaker.

### Troubleshooting

#### Speaker doesn't power on.

- The speaker is not connected to an AC power source. Make sure the AC charger is connected to a working power outlet.
- Check that the appropriate adapter plug is correctly attached to the AC charger.
- The battery is completely discharged. Connect the AC charger and recharge the battery.

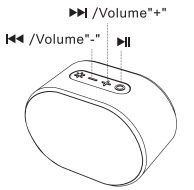
#### Speaker doesn't connect to a mobile device.

- The Bluetooth connection is experiencing wireless interference. Move the speaker away from appliances such as microwave ovens and other wireless devices.
- The Bluetooth device is out of range. Bring the Bluetooth device closer to the speaker.
- The Bluetooth device is malfunctioning. Power cycle the device and try again.
- The Bluetooth device is malfunctioning. Power cycle the device, remove the pairing information (Forget this Device on iOS or unpair on Android) and re-pair the speaker to the device.
- Bluetooth is off on the device. Make sure your device Bluetooth setting is switched on.

### Product Care

1. Use original cable to charge the speaker.
2. The use of a certified charger is recommended.
3. Overcharging may reduce battery life expectancy and performance.
4. This product contains a built-in lithium battery. Please do not expose this product to sunlight, open flames or heat sources such as but not limited to radiators, heaters, kettles or other appliances that may heat up. Do not dispose of into open fire, as it may explode.
5. No user serviceable parts, do not disassemble for any reason; warranty voided if opened.
6. Do not expose the speaker to corrosive liquids.
7. Do not expose the product to extreme temperatures.
8. Do not operate speaker during a thunderstorm. Storms may cause abnormal equipment operation and increase the risk of electric shock.
9. Do not attempt to replace the product battery, it is built-in battery and not user changeable.
10. Do not let this product come into contact with any sharp objects or rough surfaces to avoid damage.
11. Observe all signs and displays that require an electrical device or RF radio product to be switched off in designated areas.

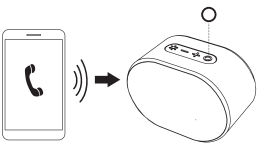
### Music Mode



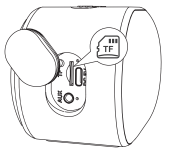
- Plus "+" Button
- Short press to increase the volume.
  - Long press to play the next music.
- Minus "-" Button
- Short press to decrease the volume.
  - Long press to play the previous music.
- Power Button
- Short press to play or pause the music.

### Voice Call Mode

- Short press to answer or end call.
- Long press to reject call.



### TF Card Play Back



Double press the Power Button to switch to TF card mode.  
\*When switching TF card mode, music will continue to play where it ended before the switch.

### Customer Service

For warranty, repairs or any missing parts, please contact [support@mbeat.com.au](mailto:support@mbeat.com.au) before returning to the point of purchase.

For the purposes of warranty, please keep the product's original packaging, with all manuals, cables and accessories included.

You can register your purchase with the below link:  
<https://www.mbeat.com.au/product-registration>

SUBSCRIBE TO MBEAT NEWSLETTER  
[www.mbeat.com.au](http://www.mbeat.com.au)

LIKE & FOLLOW US ON SOCIAL MEDIA

- [mbeat\\_australia](#)
- [mbeat](#)
- [mbeataustralia](#)

Disclaimer: mbeat and the mbeat logo are trademarks of Ultra Imagination Technology Pty Ltd. All other trademarks, product names, logos, and brands are the properties of their respective owners. Product specifications are subject to change without notice. Images are for illustrative purposes only. Made in China. mbeat is not liable for damages caused by improper use of this product. © 2020 Ultra Imagination Technology Pty Ltd.

Thank you for choosing this mbeat® product. Please read the instructions carefully before use. Store this manual in a safe place for future reference.

## Features

Compact and IPX6 waterproof design with festival party light.  
Full range speaker with passive radiator gives deep, punchy sound.  
Multi-colour light that flashes in sync with the beat to suit your mood.  
Rugged with long battery life means you can party longer and party anywhere.

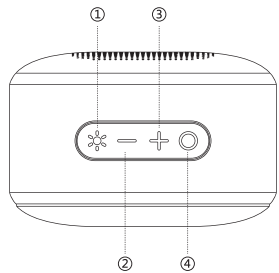
## Specifications

Bluetooth Version: 5.0
Speaker Driver: 1 × 50mm driver + 1 × passive radiator
Output Power: 7W
Input: DC 5V (USB-C)
Light Mode: RGB multi-colour light
Audio Mode: Bluetooth, AUX, MicroSD
Bluetooth Range: 10m
Battery Capacity: 3.7V/1500mAh
IP Rating: IPX6
Play Time: 9.5hr (50% Volume); 6hr (100% Volume)
Charging Time: 2.5hr
Product Dimensions: 11cm × 7.4cm × 7.3cm
Product Weight: 0.277kg

## Package contents

1 × BUMP B1 Speaker	1 × Charging Cable	1 × User Manual
---------------------	--------------------	-----------------

## Product Overview



### 1. Party Light Button

- Short press to multiple colour changing modes.
- Double press to turn the mode ON/OFF.
- Long press 5 seconds for alarm.

### 2. Minus “-” Button

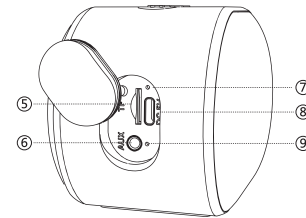
- Short press to decrease volume.
- Long press to change to previous track.

### 3. Plus “+” Button

- Short press to increase volume.
- Long press to skip to next track.

### 4. Power Button

- Long press to turn the speaker ON/OFF.
- Short press to play or pause.
- Short press to answer or end call.
- Long press to reject call.
- Double press to switch to audio mode.
- Press 3 times to turn Siri mode ON/OFF.



### 5. TF Card Slot

- To play audio file from the TF card.

### 6. 3.5mm AUX In

- Use 3.5mm audio cable to connect the speaker with your device to play.

### 7. Charging Indicator

- A red indicator turns on when charging.

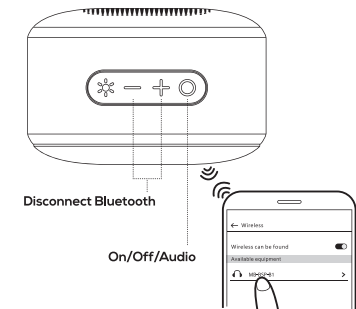
### 8. DC Power In

- Use this USB-C port to charge your speaker.

### 9. Reset Button

- Press to reset the speaker in case of the device is not responsive.

## Bluetooth Pairing

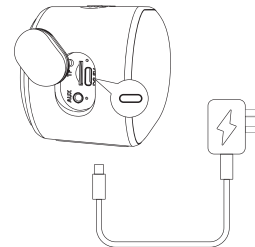


1. Long press to turn on the speaker, it will automatically switch to Bluetooth pairing mode. A sound will play to indicate that the speaker is in pairing mode.
2. Turn on the Bluetooth feature of your media device and search for “MB-BSP-B1”, select to begin pairing.
3. Once your media device is successfully paired with the speaker, a sound will play to indicate the speaker has finished pairing.
4. This speaker will automatically pair with the closest, most recently paired device.
5. Short press Plus “+” and Minus “-” Button together to disconnect with paired device.

## Note

1. The Bluetooth speaker can only sync with one device at any time, and the connection cannot be deleted while paired. It can only be deleted in while the speaker is no longer paired.
2. A Bluetooth connection list cannot have two devices with the same name. This will cause one of the two devices to fail to connect via Bluetooth.
3. Some music players on certain smartphones do not have smooth cache; this will cause a slight “POP” tone when paused. This is a normal sound.
4. If Bluetooth pairing fails, delete other Bluetooth devices in the connection list, restart speaker and try again.
5. Disconnecting from Bluetooth is not immediate; it can take a few seconds to fully disconnect from the smart phone.

## Charging The Device



A red light indicates that the battery is charging. This light will turn off when the battery is fully charged.

\*To preserve battery lifespan, fully charge at least once every 45 days.