



# MB- PT-28 Series

USER MANUAL

---

A series of five horizontal white lines of varying thicknesses, stacked vertically at the bottom of the page.



**Thank you for purchasing the MB-PT-28 turntable, please keep this manual for future reference.**

**The MB-PT-28 turntable is a true Hi-Fi experience, boasting a solid metal platter over sub-plater system to dampen unwanted resonance and noise. Enjoy your favourite 33/45 vinyl – or stream with Bluetooth via a smart device – using the included set of powerful speakers or plug directly into your own sound system with the unit's built-in pre-amplifiers. Complete with adjustable counterweight, anti-skating and moving magnet cartridge, immerse yourself in uncompromising, authentic sound.**

---

## **DO NOT RETURN TO STORE.**


If you have an issue with the product, warranty concerns, or any other queries, please feel free to get in touch with our friendly customer support team at [support@mbeat.com.au](mailto:support@mbeat.com.au)  
Please visit [mbeat.com.au](http://mbeat.com.au) for more product details.

---

 SUBSCRIBE TO MBEAT NEWS LETTER  
[www.mbeat.com.au](http://www.mbeat.com.au)

 LIKE AND FOLLOW US ON SOCIAL MEDIA

 mbeataudio

 mbeat

 mbeataustralia

## CONTENTS

---

03	Technical Specifications
03	Product Features
04	Package Contents
04	Product Care
05	Product Details
06	Installation
07	Cartridge Tracking Force Adjustment
08	Anti-Skating Force Adjustment
09	Connection To The Speakers
10	Operation
11	Audacity And USB Connection
14	Maintenance And Cleaning
14	Replacing The Stylus
15	Troubleshooting
16	Product Support

## TECHNICAL SPECIFICATIONS

### Turntable

Nominal Speeds: 33 $\frac{1}{3}$  RPM, 45 RPM  
Speed Variance:  $\pm 1\%$   
Wow And Flutter:  $\leq 0.15\%$   
Signal To Noise: -65dB  
Down Force Range: 0g-6.0g  
Effective Tonearm Length: 8.6" (218.5mm)  
Overhang: 0.73in  
Power Consumption: 70W (Max)  
Outboard Power Supply: 15V/2400mA AC-DC  
Turntable Dimensions: 418mm x 360mm x 125mm  
Turntable Weight: 5.7kg

### Stylus

Model: Audio-Technica AT3600  
Frequency Response: 20Hz - 20kHz  
Channel Balance:  $< 2.5\text{dB}$   
Channel Separation:  $> 18\text{dB}$   
Output Voltage: 2.5mV  
Recommended Load Resistance: 47k $\Omega$   
Amplifier Connection: MM (Moving Magnet) - input  
Recommended Tracking Force: 3.5g $\pm 0.5\text{g}$   
Weight: 5.1g

## Speakers

Power: 18W each  
Speaker Units: Woofer: 4" | Tweeter: 2"  
Impedance: 4  $\Omega$   
Frequency Response: 50Hz-20KHz  
Speaker Dimensions: 160mm x 158mm x 249mm each  
Weight: 1.8kg each

**NOTE:** Design and specifications are subject to change without notice.

## PRODUCT FEATURES

- Removable dust cover/lid
- Solid build with wood grain finish
- Large metal alloy platter
- Anti-static felt slip mat
- Adjustable tonearm counterweight
- Integrated stereo pre-amplifier
- 2 speed settings: 33 $\frac{1}{3}$ , 45 RPM
- Moving magnetic cartridge
- USB to PC recording
- BT wireless streaming

## PACKAGE CONTENTS

- 1 × Turntable Unit
- 1 × Lid/Dust Cover
- 2 × Speakers
- 2 × Speaker Cables
- 1 × Platter
- 1 × Sub-Platter
- 1 × Drive Belt
- 1 × 45 RPM Adapter
- 1 × Counterweight
- 1 × Anti-Skating Weight
- 1 × USB-PC Cable
- 1 × Power Adapter
- 1 × Instructional Manual

This turntable is supplied with a factory fitted and adjusted cartridge.

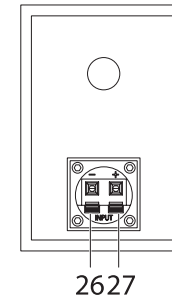
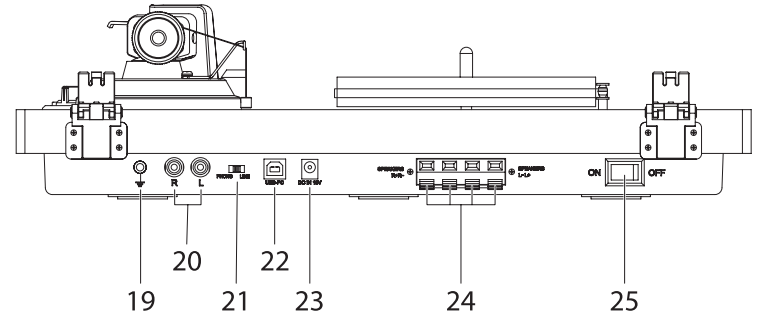
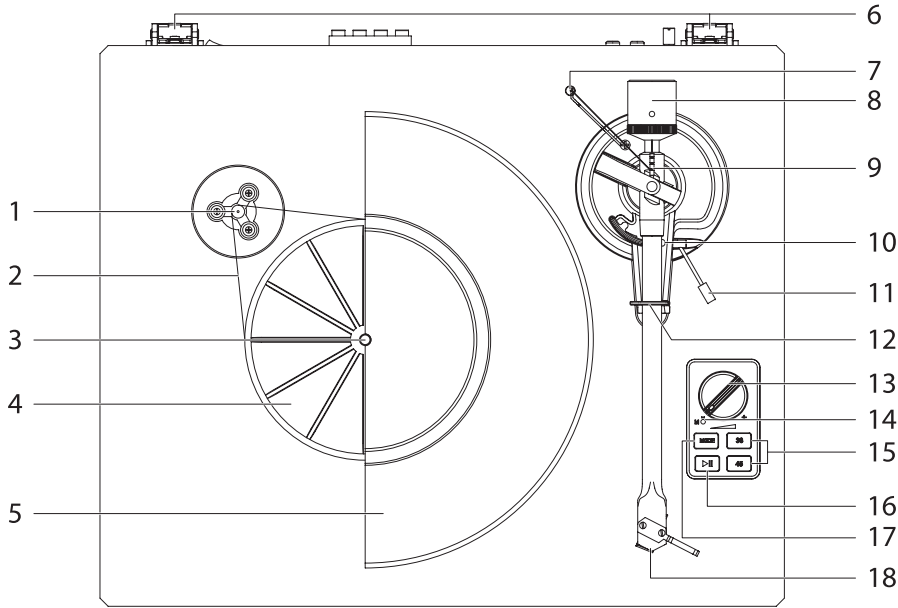
### CAUTION

No user serviceable parts inside, warranty void if device opened. This unit should not be adjusted or repaired by anyone other than qualified service professionals.

## PRODUCT CARE

- Product designed for consumer and household application only.
- For your personal safety, no user serviceable parts inside. Warranty void if device opened.
- Do NOT operated under hot, humid or wet conditions.
- Prolonged exposure to loud sounds or music can lead to temporary or even permanent hearing loss.
- Do NOT operate or store turntable where it is subjected to direct sunlight, heat, excessive dust or vibration.
- Do NOT stop turntable or power-off mid-play; always raise the needle first.
- Do NOT leave vinyl record on the turntable after use; return the record to its original sleeve or storage.
- Return the tonearm to its original position after use and secure it with the tonearm clip.
- Replace the protective cap of the stylus after use.
- Close the turntable cover and to avoid dust build-up.
- Unplug the turntable during a lightning storm, or when not in use for long periods of time.

## PRODUCT DETAILS



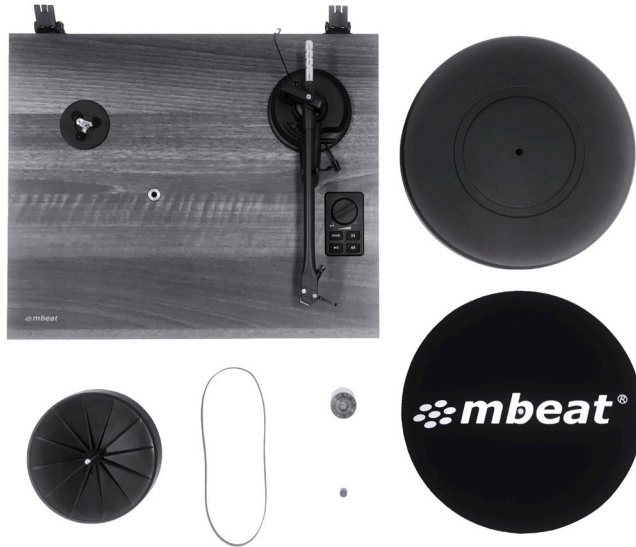
- 1. Drive Motor
- 2. Drive Belt
- 3. Spindle
- 4. Sub-platter
- 5. Platter
- 6. Dust Cover Hinge
- 7. Anti-skating Weight

- 8. Counterweight
- 9. Anti-skating Stub
- 10. Tonearm Lift
- 11. Cue Lever
- 12. Tonearm Rest with Clip
- 13. Volume Control
- 14. LED Indicator

- 15. Play speed/RPM buttons
- 16. Play/Stop Button
- 17. Mode Button
- 18. Cartridge
- 19. Ground Connector
- 20. RCA Out
- 21. Phono/Line Out Switch

- 22. USB-PC Port
- 23. Power Jack
- 24. Speaker Wire Terminal/Jack
- 25. Power Switch
- 26. Speaker Jack -
- 27. Speaker Jack +

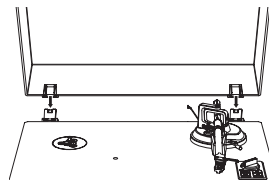
# INSTALLATION



 **WATCH VIDEO!**  
Scan the QR code for MB-PT-28 Hi Fi Turntable with Speaker Installation Video Guide

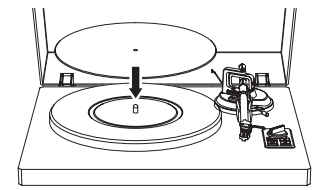
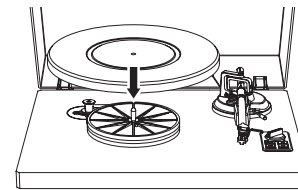
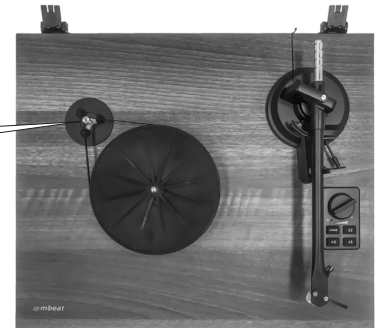
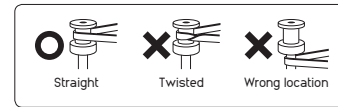
## Installing The Lid

Make sure both hinges on the unit are parallel before installing. Line up the hinges of the turntable with the corresponding slots and insert simultaneously. It is recommended to install the lid last to make it easier during setup and calibration.



## Initial Setup

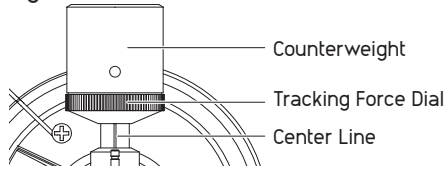
1. Place the turntable on a flat and level surface, free of movement or vibrations.
2. Fit the sub-platter onto the spindle in the middle of the unit.
3. Secure the drive belt around the sub-platter and the drive motor, taking care to secure it between the lips of the drive spindle.
4. Place the turntable platter onto the spindle, on top of the sub-platter.
5. Place the slip mat over the platter.



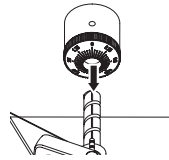


## Cartridge Tracking Force Adjustment

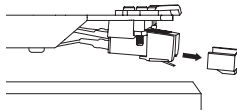
The counterweight supplied is suitable for cartridges weighting between 3.0-6.0g.



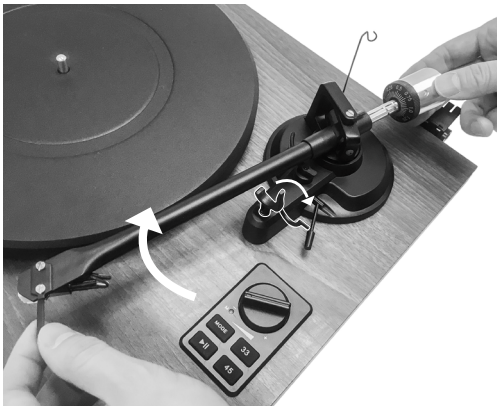
- Screw the counterweight onto the rear of the tonearm; the scale should be facing the front of the turntable.



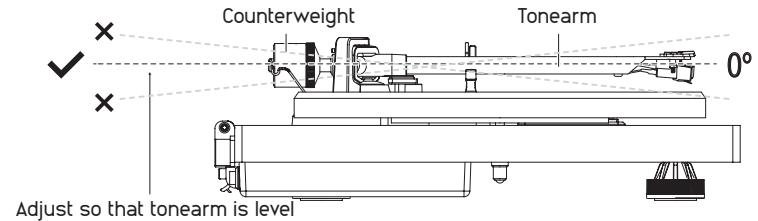
- Remove protective cap of the stylus/cartridge.



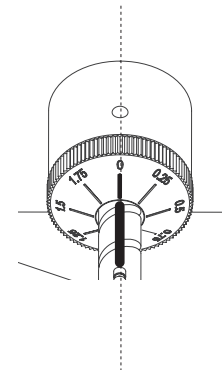
- Lower the cue lever and position the cartridge in the space between tonearm rest and platter.



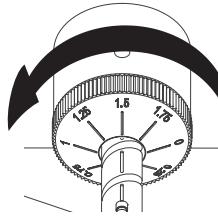
- Adjust the counterweight until the tonearm is level or parallel to the surface. The tonearm should return to this position if even if moved. This adjustment should be done precisely and patiently.



- Once the tonearm is correctly balanced return it to the tonearm rest. Hold the counterweight without moving it, and slowly turn the Downforce Scale ring until the zero is in line with black line on the rear of the tonearm. Check whether the tonearm is still balanced.



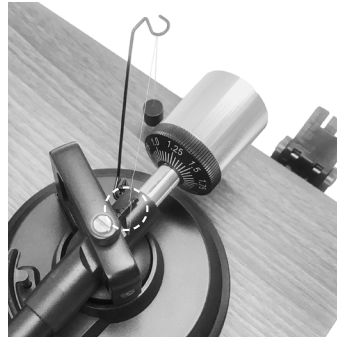
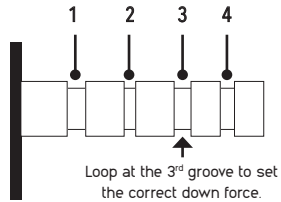
- "Tighten" the counterweight to adjust the down force in accordance to cartridge manufacturer's recommendation. One mark on the scale represents 0.05g of down force.



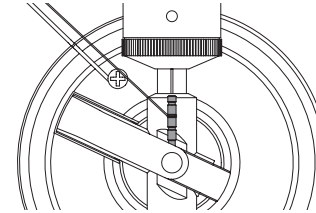
**NOTE:** The recommended down force for the factory fitted cartridge is  $3.5 \pm 0.5g$ .

### Anti-Skating Force Adjustment

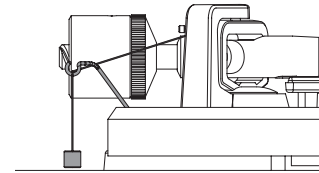
The anti-skating force must be adjusted corresponding to the down force as follows:



Slip the loop of the anti-skating weight's thread over the **3<sup>rd</sup> groove** of the stub to set the correct anti-skating force for the factory-fitted cartridge.



Feed the thread through the loop of the wire support.

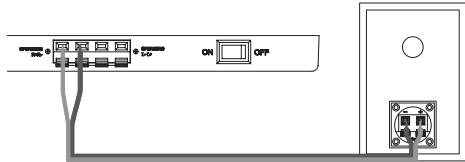


Groove in the stub	Down force
1	5 - 10mN
2	10 - 15mN
3	15 - 20mN
4	20mN and bigger



## CONNECTION TO THE SPEAKERS

### Connecting To Included Speakers



This turntable has built-in pre-amplifiers and can work with the included set of speakers or others using the speaker wire terminals at the back, simply insert speaker wires into the terminals and secure using the built-in clips.

### Connecting To An Amplifier

- This turntable unit uses a moving magnetic cartridge
- Set the PHONO & Line Out Switch to PHONO mode.
- Connect the phono out cables to the phono input on your amplifier of pre-amplifier or phono stage.
- \* Line inputs such as CD, Tuner, Tape, or Video are not suitable for phono inputs.\*
- Make sure the amplification of the selected input matches the type of cartridge being used; the default factory cartridge is 47k ohms/MM-input.

**NOTE:** If your amplifier does not have an input suitable for phono cartridges, you will need to purchase a separate phono amplifier for moving magnetic cartridges. This separate phono amplifier will connect between your turntable and your amplifier.

### Connecting To A Stereo System

- Set the PHONO & Line Out Switch on LINE mode.
- The RCA PHONO & Line Out Jacks output analog line-level signals; they can be connected directly with a pair of powered speakers of the appropriate input of your stereo system.
- The Red plug connects with the Right channel and the White plug connects with the Left channel.

**NOTE:** The RCA Jacks are not designed to be connected directly to the passive/unpowered speakers on LINE mode; it will produce no sound if connected to passive speakers.

## OPERATION

### Turntable Operation

- Connect the included power adapter to turntable and flick the power switch to the "on" position.
- Remove the protective cap of the stylus/cartridge.
- Place the slip mat on the platter and place a record on the slip mat. If playing 45 RPM records, put the 45 RPM adapter on the spindle before placing the record on the platter.
- Set the speed on 33/45 RPM using the corresponding buttons according to the record.
- Press the Play/Stop button to spin the platter.
- Unlock the tonearm clip and set the cue lever to the up position.
- Position the tonearm over the desired location (groove) on the record.
- Move the cue lever to the down position, tonearm will slowly lower onto the record.
- When you are finished playing the record, raise the tonearm using the cue lever, return it to the rest, and press Start/Stop button again to stop spinning the platter.

#### **AUTO STOP**

To protect the stylus from unnecessary wear, the platter will automatically stop if the record is silent for over a minute. The turntable will automatically go into standby if no music is played for 15 minutes or longer. To restart the turntable, press and hold the Mode Button for 3 seconds.

### Bluetooth Operation

This unit has a Bluetooth receiver to receive audio from a Bluetooth enabled device wirelessly.

1. Press the Mode Button, the LED Indicator will change from red to blue to indicate switching from Turntable Mode to Bluetooth Mode.
2. Switch on the Bluetooth on your device and search for "MB-PT-28" under the list of devices to pair. Select it to pair your device with the turntable.
3. If paired successfully, a confirmation sound will play. You may now play music directly to the turntable/speakers via your device.

## AUDACITY AND USB CONNECTION

This turntable allows you to digitise your records onto your PC via Audacity, a music recording software that you can download for free at <https://www.audacityteam.org/download/>

### Instruction for PC Encoding

1.1 Connect the USB cable with your turntable and your computer. No extra driver is required.

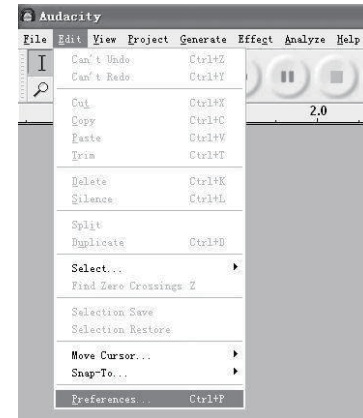
1.2 Download the Audacity software from <https://www.audacityteam.org/download/>. Follow the instructions to complete installation.

### Recording

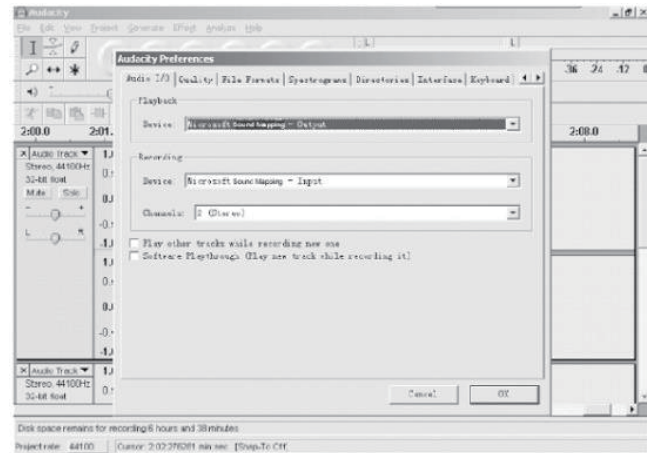
2.1 Open the software



2.2 Choose "Edit" menu, then choose "Preferences"

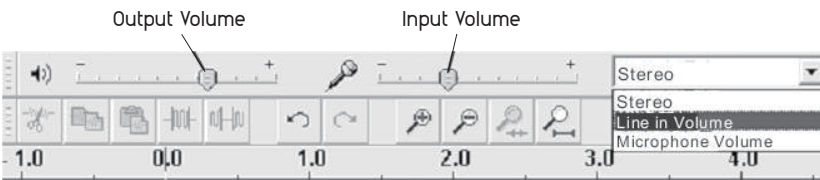
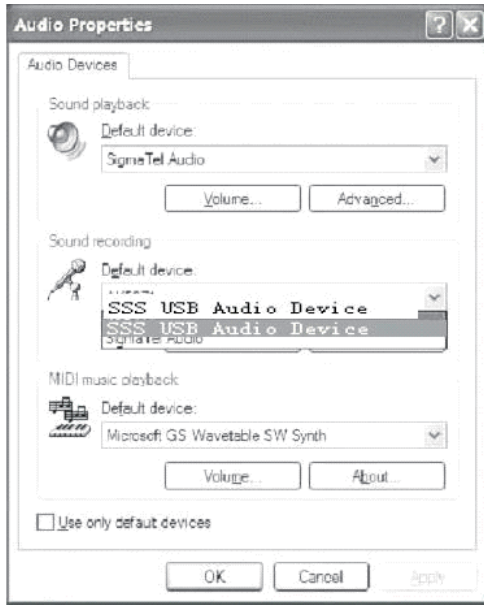


2.3 Audacity Preferences

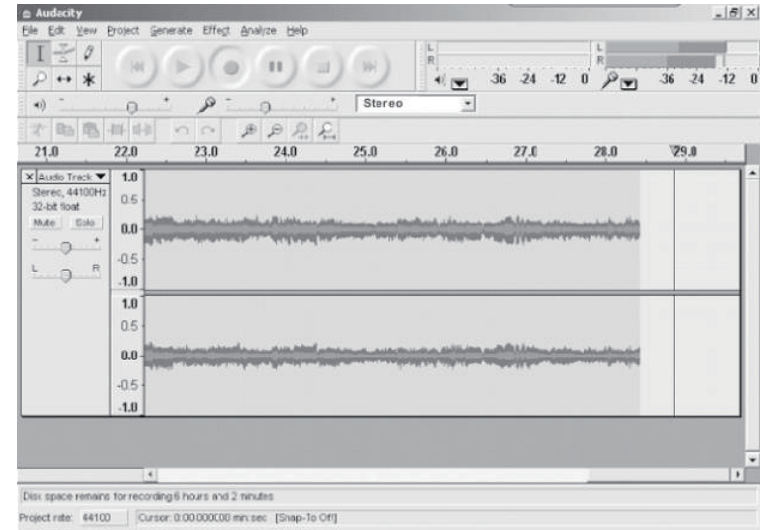


**NOTE:** you need to check your computer audio properties, the sound recording should be selected: "SSS USB Audio Device" as below:

### 2.3 Adjust the output and input volume.



### 2.4 Select the record button to record the disc, the left and right tracks will show on the interface:



2.4.1 Press this button ●, start recording.

2.4.2 Click the button ◀◀ to skip to start;

2.4.3 Click the button ▶▶ to skip to end;

2.4.4 Click the button ▶ to play;

2.4.5 Click the button || to pause the record play;

2.4.6 Click the button ■ to stop the recording.



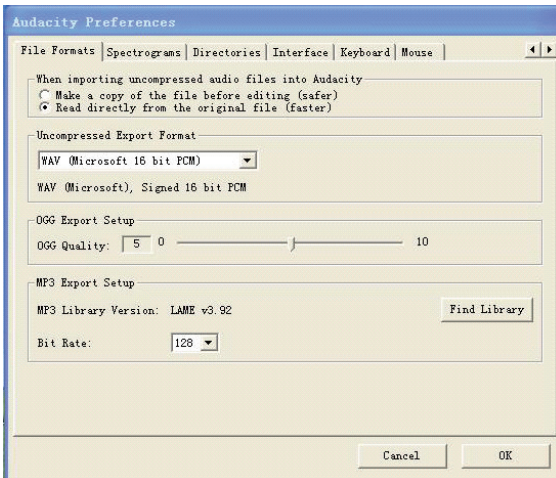
3. Export the Music Files for WAV, MP3, Format.

- Once you have finished recording, you should save your music to the computer.
- Click File menu and move down to Export as WAV format, MP3 format or Ogg format.
- Click on any format to save the music, and you will be asked for the file name of the music recording.

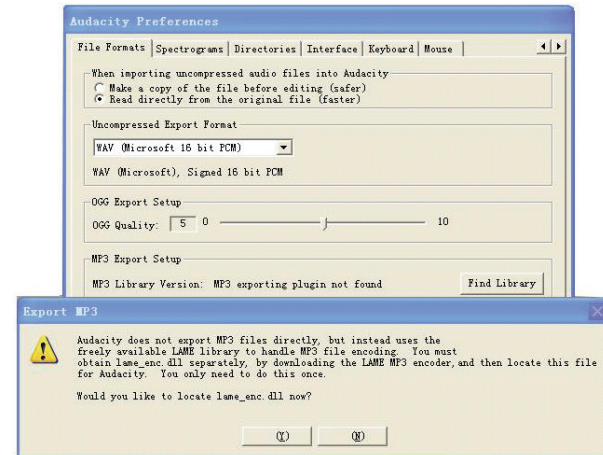
**NOTE:** Audacity does not export MP3 files directly. You should download the LAME MP3 encoder. A link to find LAME MP3 can be found at <https://www.audacityteam.org/download>

If you do not see the sound wave on the interface, try adjusting the line in volume while recording as below:

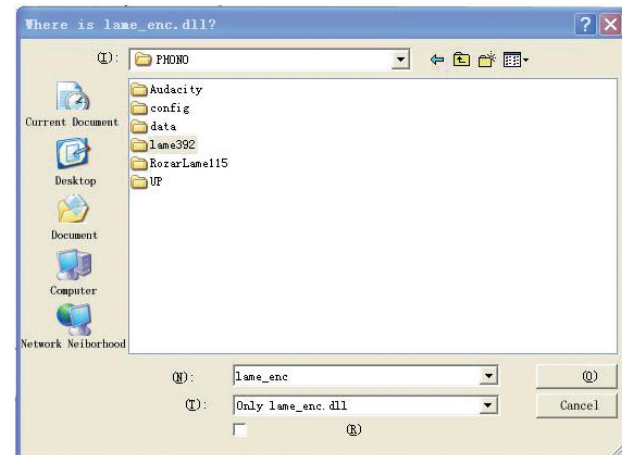
1. Download "lame\_enc.dll" file, and install it on the software list.
2. Open the "Audacity" software, click Main Menu, Select "edit", "Parameter", "File Formats", and click the "Searcher"



3. After opening, the following menu should be on screen, click "YES" to go to "Lame\_enc.dll", and find the file's location.



4. After you find the "lame\_enc.dll" nfile, open it and click "Y" to finish the installation.



## MAINTENANCE AND CLEANING

**NOTE:** Always disconnect power before performing any maintenance or cleaning.

Your turntable requires very little regular maintenance. Remove dust with a slightly damp antistatic cloth. Don't use a dry cloth, as this will create static electricity and attract even more dust. Antistatic cleaning agents are available at specialist stores but must be applied sparingly to avoid damage to rubber parts. Ensure that the cartridge cover is on before cleaning or maintenance to avoid damage to the cartridge.

If the turntable is not used over a long period of time, the drive belt should be removed to prevent over-stretching.

### Useful Tips

The turntable should be positioned on a low-resonance surface such as wood or multiple layer ply board to avoid structural vibrations disturbing playback.

### Stylus Cleaning

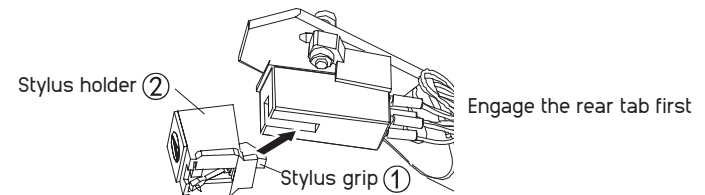
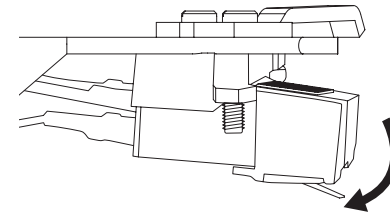
- If dirt and grime are stuck to the stylus tip clean it with a professional stylus cleaning brush.
- It is recommended to use a stylus cleaner if the stylus tip is considerably dirty (sold separately).
- Clean the stylus tip by moving the brush from the rear to the front of the stylus, not side to side.

## REPLACING THE STYLUS

### Cartridge Replacement

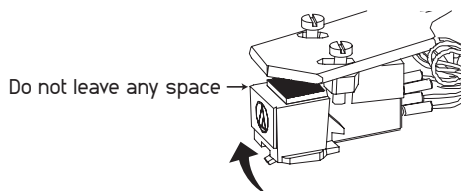
- In addition to deteriorating sound quality, records may be damaged or scratched as the cartridges stylus wears down over time.
- Consider replacing the stylus after 300 to 500 hours of use for best results.
- Before removing the stylus, make sure the power is disconnected.

1. Remove the protector from the cartridge.
2. Remove the stylus by pulling it downwards from the protruding nub.
3. Install the new stylus by inserting the stylus grip into the rear tab of the cartridge.





4. Push the stylus into the cartridge until it locks into position completely.



## TROUBLESHOOTING

### Potential Incorrect Use And Fault Conditions:

This turntable is manufactured to the highest standards and undergoes strict quality controls before leaving the factory. Faults that may occur are not necessarily due to material or production faults, and often attributed to incorrect use or care of product. The following is a short list of such faults:

#### The Platter Doesn't Turn Although The Unit Is Switched On:

- The unit is not connected to the main power supply.
- No power at the outlet.
- Drive belt is not installed properly or has slipped off.
- The unit has automatically switched to standby mode.

#### No Signal Through One Or Both Channels:

- Phono input not selected at amplifier.
- Amplifier not switched on.
- Amplifier or speakers muted.
- No connection to the speakers.
- No connection between turntable and amplifier.
- Wire leads not connected to the cartridge.

#### Strong Hum On Phono Input:

- No ground connection from cartridge, arm, or arm cable to amplifier or ground loop.
- Turntable too close to speakers.

#### Distorted Or Inconsistent Sound From One Or Both Channels:

- Turntable is connected to wrong input on amplifier.
- Needle or cantilever damaged.
- Drive belt overstretched or dusty/dirty.
- Platter bearing damaged or dusty/dirty.
- Stylus damaged, not aligned or dusty/dirty.
- MM/MC switch on pre-amplifier set incorrectly.

**REMARK:** Due to the ErP Stage 2 requirements for power saving measures, an electrical appliance that is connected to the mains power will switch itself to standby mode automatically while inactive for over 20 minutes. If your unit switches off regularly without continuous play, this is by design, not a fault.

## PRODUCT SUPPORT

Looking for more help? Please visit [mbeat.com.au](http://mbeat.com.au) for product details.  
Support email: [support@mbeat.com.au](mailto:support@mbeat.com.au)





---

Disclaimer: mbeat and the mbeat logo are trademarks of Ultra Imagination Technology Pty Ltd. All other trademarks, product names, logos, and brands are the properties of their respective owners. Product specifications are subject to change without notice. Images are for illustrative purposes only. Made in China. mbeat is not liable for damages caused by improper use of this product. © 2020 Ultra Imagination Technology Pty Ltd.