



MB- PT-18 Series

**TURNTABLE
USER MANUAL**



THANK YOU

Thank you for purchasing a genuine quality mbeat product.

**With your continued help and support, we can strive to
provide better value and quality to our customers.**

**We hope you will enjoy your new purchase as much as we
enjoyed bringing it to life.**



Thank you for purchasing MB-PT-18 series turntable, please keep this manual for future reference.

The MB-PT-18 series sports an aluminium alloy platter, reducing vibrations for an authentic listening experience. Play all of your 33/45 RPM vinyls with variable pitch and built-in pre-amplifier; plug directly into your existing sound system. Complete with adjustable counterweight, anti-skating and a magnetic cartridge, this is a unit tailored for true vinyl connoisseurs.

Product Features

- Removable plastic dust cover/casing
- Solid wooden case with gloss finish
- 29.5cm aluminium alloy platter
- Anti-static anti-slip mat
- Adjustable tonearm counterweight
- Integrated stereo pre-amplifier
- 2 speed settings: 33/45 RPM
- Magnetic cartridge
- USB to PC recording
- BT wireless streaming

Technical Specifications

Nominal Speeds: 33 1/3RPM, 45RPM
Speed Variance: $\pm 1\%$
Wow and Flutter: $\leq 0.15\%$
Signal to Noise: 55dB
Down force Range: 3.0-6.0g
Effective Tonearm Length: 8.6" (218.5mm)
Overhang: 0.73in
Power Consumption: 5W (Max)
Outboard Power Supply: 12V/500mA AC-DC
Dimensions (W x H x D): 420 x 360 x 125mm
Weight: 4.8kgs

CAUTION

No user serviceable parts inside, warranty void if device opened.
This unit should not be adjusted or repaired by anyone other than qualified service professionals.

Package Contents

1	Turntable Unit
2	Removeable Cover/Lid
3	DC Adapter with AU plug-end
4	Counterweight
5	Metal Platter
6	Drive Belt
7	45 RPM Adapter
8	Turntable Slipmat
9	Instructional Manual
10	Cartridge Alignment Protractor
11	USB-PC Cable
12	Anti-skating Weight

This turntable is supplied with a factory fitted and adjusted cartridge.

**The following instructions for adjusting the cartridge are provided in case the cartridge is replaced by a different model at a later date.

PRODUCT CARE

- Product designed for consumer and household application only.
- For your personal safety, no user serviceable parts inside. Warranty void if device opened.
- Do NOT operated under hot, humid or wet conditions
- Prolonged exposure to loud sounds or music can lead to temporary or even permanent hearing loss.
- Do NOT operate or store turntable where it is subjected to direct sunlight, heat, excessive dust or vibration.
- Do NOT stop turntable or power-off mid-play; always raise the needle first.
- Do NOT leave vinyl record on the turntable after use; return the record to its original sleeve or storage.
- Return the tonearm to its original position after use and secure it with the tonearm clip.
- Replace the protective cap of the stylus after use.
- Close the turntable cover and to avoid dust build-up.
- Unplug the turntable during a lightning storm, or when not in use for long periods of time.

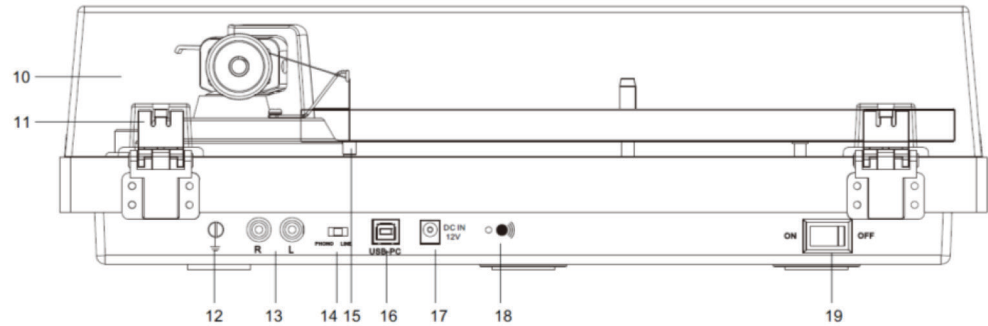
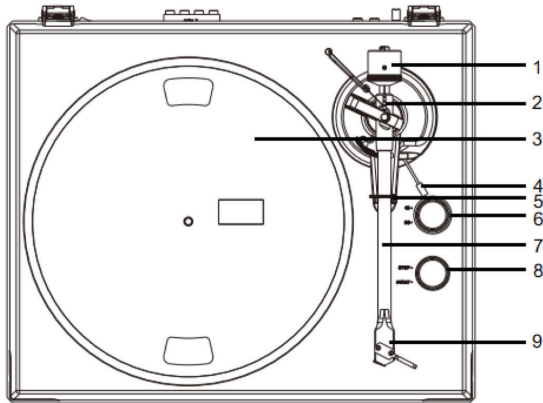
INSTALLATION

1. Unpack all parts and remove protective material.
2. Install the Lid carefully over the hinge prongs.

*Do not connect the unit to the mains before checking the mains voltage and before all other connections have been made.

*Those instructions are related only to products using power cable or AC power adapter.

COMPONENTS, FEATURES AND CONNECTIONS



- 1. Counterweight
- 2. Anti-skating Stub
- 3. Turntable Platter
- 4. Tonearm Lift Lever
- 5. Tonearm Rest

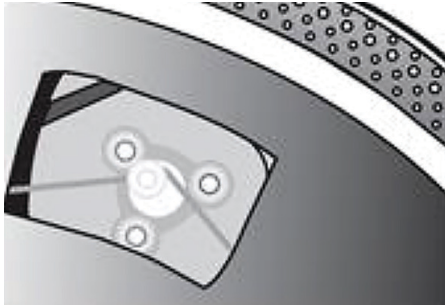
- 6. 33/45 Selector
- 7. Tonearm
- 8. Stop/Start Knob
- 9. Cartridge

- 10. Lid
- 11. Lid Hinge
- 12. Ground Connector
- 13. PHONO & Line Out Jacks
- 14. PHONO & Line Out Switch

- 15. Anti-skating Weight
- 16. USB-PC port
- 17. AC-DC Power Jack
- 18. Bluetooth Indicator
- 19. Power Rocker Switch

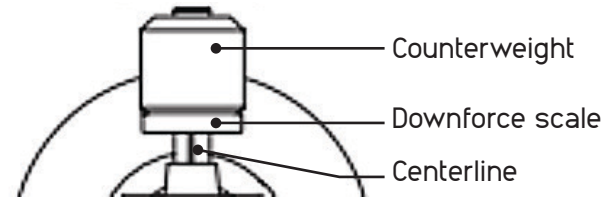
*This turntable is supplied with a factory fitted and adjusted cartridge.

Turntable Platter and Belt Setup



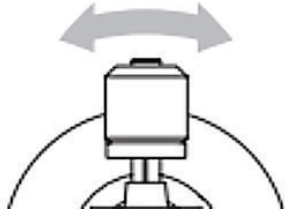
1. Secure the drive belt over the inner ring under the turntable platter.
2. Place platter onto spindle, hollow side down, and rotate platter until drive motor is visible and accessible via platter window.
3. Affix the drive belt to the drive motor spindle, taking care to secure it between the upper and lower lip.
4. Connect the turntable to power via adapter and switch on the main power.
5. Flick on the power switch; if installed correctly your platter should now be spinning.

Cartridge Down force Adjustment

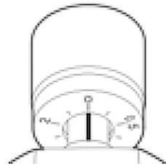


The counterweight supplied is suitable for cartridges weighing between 3.0-6.0g.

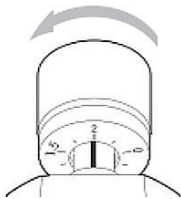
- Screw the counterweight onto the rear of the tonearm; the scale should be facing the front of the turntable.
- Remove protective cap of the stylus/cartridge.
- Lower the tonearm lift and position the cartridge in the space between tonearm rest and platter.
- Adjust the counterweight until the tonearm is level or parallel to the surface. The tonearm should return to this position if even if moved. This adjustment should be done precisely and patiently.



- Once the tonearm is correctly balanced return it to the tonearm rest. Hold the counterweight without moving it, and slowly turn the Downforce Scale ring until the zero is in line with black line on the rear of the tonearm. Check whether the tonearm is still balanced.



- "tighten" the counterweight to adjust the down force in accordance to cartridge manufacturer's recommendation. One mark on the scale represents 0.05g of down force.



NOTE: The recommended down force for the factory fitted cartridge is $3.5 \pm 0.5g$.

Anti-skating force adjustment

The anti-skating force must be adjusted corresponding to the down force as follows:



Down force

- 5 - 10mN
- 10 - 15mN
- 15-20mN
- 20mN and bigger

Groove in the stub

- 1st from bearing rings
- 2nd " " "
- 3rd """"
- 4th " " "

Slip the loop of the anti-skating weight's thread over the 3rd groove of the stub to set the correct anti-skating force for the factory-fitted cartridge. Feed the thread through the loop of the wire support.

Connecting to an amplifier

- This turntable unit uses a moving magnetic cartridge
- Set the PHONO & Line Out Switch to PHONO mode.
- Connect the phono out cables to the phono input on your amplifier or pre-amplifier or phono stage. * Line inputs such as CD, Tuner, Tape, or Video are not suitable for phono inputs.*
- Make sure the amplification of the selected input matches the type of cartridge being used; the default factory cartridge is 47k ohms/MM-input.

NOTE: If your amplifier does not have an input suitable for phono cartridges, you will need to purchase a separate phono amplifier for moving magnetic cartridges. This separate phono amplifier will connect between your turntable and your amplifier.

Connecting to a stereo system

- Set the PHONO & Line Out Switch on LINE mode.
- The RCA PHONO & Line Out Jacks output analog line-level signals; they can be connected directly with a pair of powered speakers of the appropriate input of your stereo system.
- The Red plug connects with the Right channel and the White plug connects with the Left channel.

NOTE: The RCA Jacks are not designed to be connected directly to the passive/unpowered speakers on LINE mode; it will produce no sound if connected to passive speakers.

Main Power Connection

Unpack the power adapter and plug the small end into the DC power jack located at the back of the turntable. Plug the power adapter into your power outlet.

OPERATION

Turntable Operation

- Connect the included power adapter to turntable and flick the power switch to the "on" position.
- Remove the protective cap of the stylus/cartridge
- Place the slipmat on the platter and place a record on the slipmat. If using 45 RPM records, put the 45 RPM adapter on the spindle before placing the record on the platter.
- Set the 33/45 RPM dial according to the type of record.
- Turn the Start/Stop dial to the "Start" position.
- Unlock the tonearm clip and set the tonearm lift lever to the up position.
- Position the tonearm over the desired location (groove) on the record.
- Move the tonearm lift lever to the down position and carefully lower the tonearm onto the record.
- When you are finished playing the record, raise the tonearm first, return it to the rest, and turn the Start/Stop dial to the "Stop" position.

Bluetooth Operation

This unit has a Bluetooth transmitter to send audio to a Bluetooth speaker wirelessly.

1. Turn on your Bluetooth speaker and ensure it is in pairing mode.
2. Turn on the turntable; the BT will search for compatible devices automatically, as shown by a flashing indicator light.
3. When pairing, the light will flash twice per second; once pairing is successful, the light will remain on without flashing.

Note: This unit will connect to the closest Bluetooth speaker nearby. If there are no Bluetooth devices nearby for pairing, the transmitter will become inactive and the LED will turn off automatically after 2 minutes.

4. To disconnect pairing, power off the turntable or turn off Bluetooth pairing on your Bluetooth speaker.

Audacity and USB Connection

It supports Windows95/Window XP/Window 7/Vista or more advanced version, with the EMS memory more than 128MB and Audacity take space of 5MB.

Recording the LP into PC through USB jack:

For installing and recording step please reference to the BRIEF INTRODUCTION OF AUDACITY. <http://audacity.sourceforge.net/> Recording the vinyl to your computer:

1. Follow the detail step as above Turntable Operation to play the vinyl.
2. Double click the Audacity and follow the record steps showing on the BRIEF INTRODUCTION OF AUDACITY.

Instruction for PC Encoding

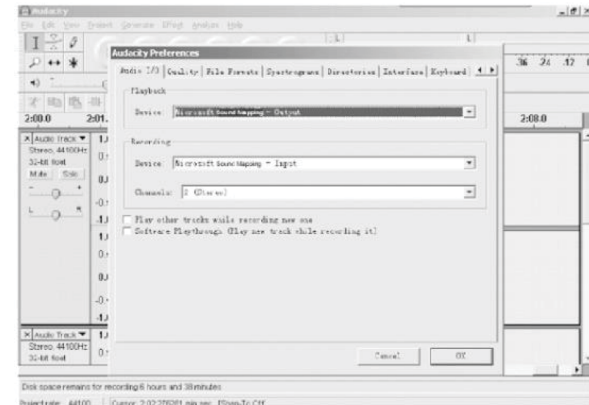
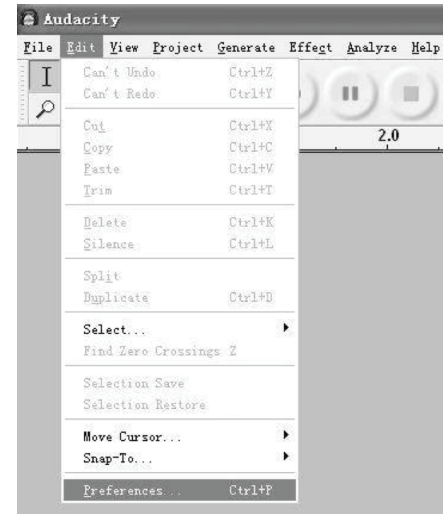
1. Software instruction

- 1.1 Connect the USB cable with your turntable and your computer. No extra driver is required.
- 1.2 Download the Audacity software from <http://audacity.sourceforge.net/>. Follow the instructions to complete installation.

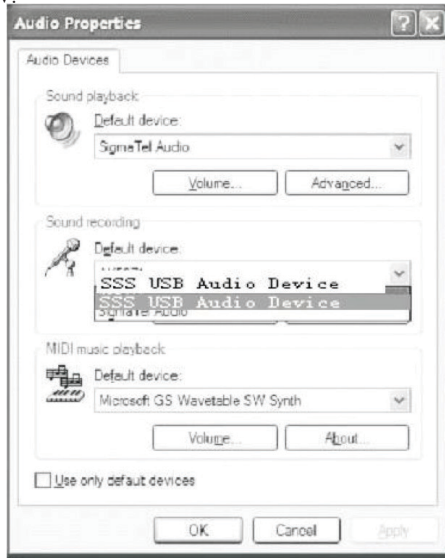
2. Recording

2.1 Open the software

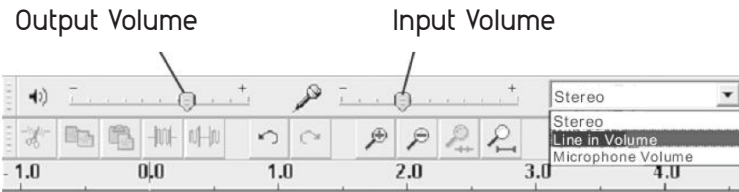
2.2 Choose "Edit" menu, then choose "Preferences";



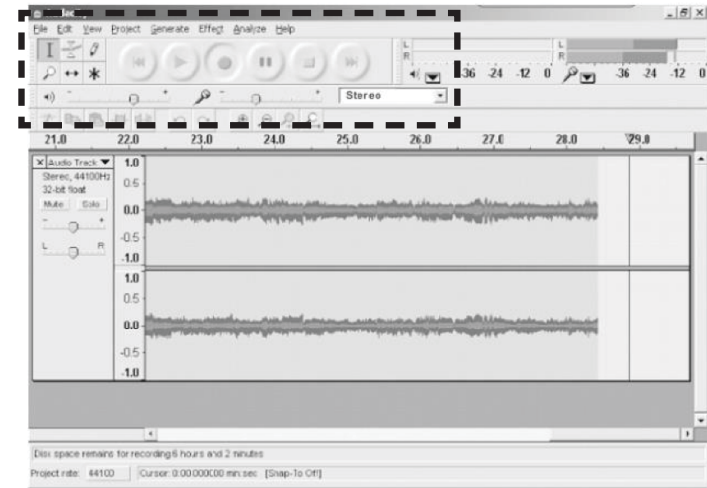
NOTE: You need to check your computer audio properties, the sound recording should be selected: "SSS USB Audio Device" as below:



2.3 Adjust the output and input volume.



2.4 Select the record button ● to record the disc, the left and right tracks will show on the interface:



2.4.1 Press this button ●, start recording.

2.4.2 Click the button ◀◀ to skip to start;

2.4.3 Click the button ▶▶ to skip to end;

2.4.4 Click the button ▶ to play;

2.4.5 Click the button || to pause the record play;

2.4.6 Click the button ■ to stop the recording.

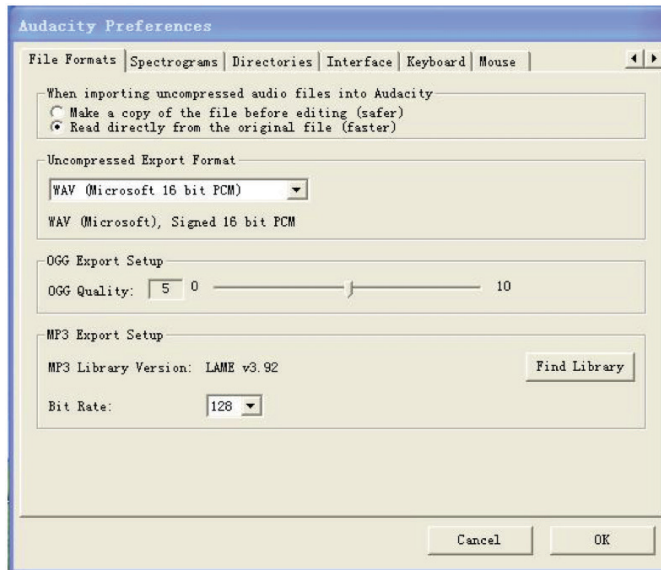
3. Export the Music Files for WAV, MP3, Format.

- Once you have finished recording, you should save your music to the computer.
- Click File menu and move down to Export as WAV format, MP3 format or Ogg format.
- Click on any format to save the music, and you will be asked for the file name of the music recording.

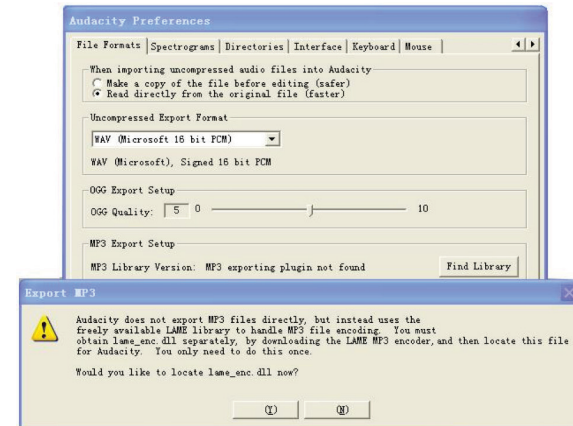
If do not see the sound wave on the interface, when recording, please adjust the line in volume as follows:

Specific Steps as follows:

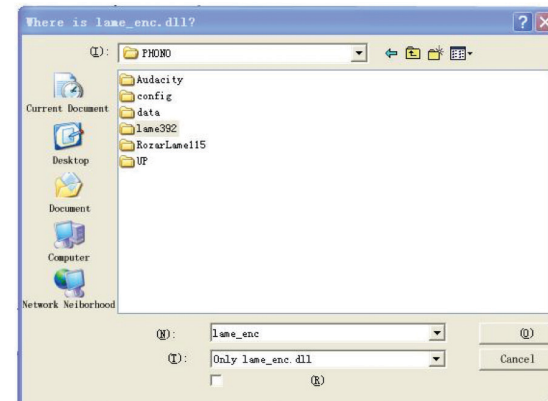
1. Download "lame_enc.dll" file, and install it to the software list.
2. Open the "Audacity" software, click Main Menu, Select "edit", "Parameter", "File Formats", and click the "Searcher".



3. After opened, it will come to the following menu, click "YES" to go to "Llame_enc.dll", and find the file's location.



4. After you find the "lame_enc.dll" file, open it and click "Y" to finish the installation.



TROUBLESHOOTING

Potential Incorrect Use and Fault Conditions

This turntable is manufactured to the highest standards and undergoes strict quality controls before leaving the factory. Faults that may occur are not necessarily due to material or production faults, and often attributed to incorrect use or care of product. The following is a short list of such faults:

The platter doesn't turn although the unit is switched on:

- The unit is not connected to the main power supply.
- No power at the outlet.
- Drive belt is not installed properly or has slipped off.
- The unit has automatically switched to standby mode, power OFF and ON again.

No signal through one or both channels:

- Phono input not selected at amplifier.
- Amplifier not switched on.
- Amplifier or speakers muted.
- No connection to the speakers.
- No connection between turntable and amplifier.
- Wire leads not connected to the cartridge.

Strong hum on phono input:

- No ground connection from cartridge, arm, or arm cable to amplifier or ground loop.
- Turntable too close to speakers.

Distorted or inconsistent sound from one or both channels:

- Turntable is connected to wrong input on amplifier.
- Needle or cantilever damaged.
- Drive belt overstretched or dusty/dirty.
- Platter bearing damaged or dusty/dirty.
- Stylus damaged, not aligned or dusty/dirty.
- MM/MC switch on pre-amplifier set incorrectly.

Remark: Due to the ErP Stage 2 requirements for power saving measures, an electrical appliance that is connected to the mains power will switch itself to standby mode automatically while inactive for over 20 minutes. If your unit switches off regularly without continuous play, this is by design, not a fault.

MAINTENANCE AND CLEANING

Your turntable requires very little regular maintenance. Remove dust with a slightly damp antistatic cloth. Don't use a dry cloth, as this will create static electricity and attract even more dust. Antistatic cleaning agents are available at specialist stores but must be applied sparingly to avoid damage to rubber parts. Ensure that the cartridge cover is on before cleaning or maintenance to avoid damage to the cartridge.

If the turntable is not used over a long period of time, the drive belt should be removed to prevent over-stretching.

NOTE: Always disconnect the record player from the power supply as a precaution before maintenance!

Useful Tips

The turntable should be positioned on a low-resonance surface such as wood or multiple layer ply board to avoid structural vibrations disturbing playback.

Cartridge Replacement

1. Before replacement, put the stylus protector back on the stylus to prevent damage to the stylus during the replacement process.
2. Carefully remove the wire leads from the original cartridge.
3. Loosen the two screws on the headshell that are securing the cartridge and then remove the original cartridge.
4. Mount the new cartridge to the headshell and tighten it lightly. Do not completely tighten the screws at this moment.
5. Connect the wire leads to the new cartridge's terminals. The wire lead colour codes are as below:
 - White Left channel positive (L+)
 - Black Left channel negative (L-)
 - Red Right channel positive (R+)
 - Black Right channel negative (R-)
6. Adjust the cartridge's position to make sure it is precisely aligned on the headshell so that the stylus will be tracking the grooves in parallel perfectly.

To achieve this, place the included paper cartridge alignment protractor over the turntable spindle, carefully lift the tone arm and place the tip of the stylus on the points marked 130mm and

250mm respectively. Fine tune the cartridge's position on the headshell until the cartridge is perfectly in parallel with the reference lines at both points.

7. Tighten the screws completely once the perfect alignment is achieved.

NOTE: If you are unfamiliar or uncomfortable with completing this procedure, we recommend consulting with a professional to perform the installation.

PRODUCT SUPPORT

Looking for more help?

Please visit mbeat.com.au for product details.

Support email: support@mbeat.com.au



Connect To Life.



www.mbeat.com.au



support@mbeat.com.au



[mbeat](https://www.facebook.com/mbeat)



[mbeat_australia](https://www.instagram.com/mbeat_australia)



[mbeataustralia](https://twitter.com/mbeataustralia)