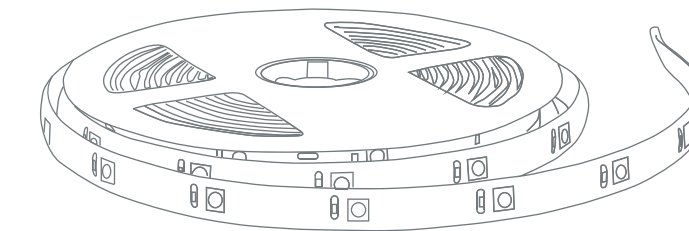


Smart LED Strip Lights

Model:
ACA-LS65RBGWW-2M, ACA-LS65RBGWW-5M



Questions or Concerns?

Please contact us at support@mbeat.com.au

✉ SUBSCRIBE TO MBEAT NEWS LETTER
www.mbeat.com.au

👍 LIKE AND FOLLOW US ON SOCIAL MEDIA

- 📷 [mbeat_australia](#)
- 📘 [mbeat](#)
- 🐦 [mbeataustralia](#)

8

7 Warranty & Customer Service

Please contact: support@mbeat.com.au for all warranty support information & claims.

If you discover your product is defective within the specified warranty period, please contact Customer Support via support@mbeat.com.au with a copy of your invoice. DO NOT dispose of your product or packaging materials before contacting us. Make sure you obtain a **Return Merchandise Authority** number, or an **RMA** number from the Customer Support Team.

Once our Customer Support Team has approved your request, they will provide details on how to return the product for repairs or replacement. Please reference this RMA on the outer package for receiving. Items not labelled with RMA will be rejected on delivery. Please retain your tracking details in the event of a failed delivery.

Please ensure all returned products are; in its original packaging, in brand new condition, and with all manuals, cables and accessories included. Returned products that do not meet these conditions will not be eligible for an exchange. The packaging of returned products must not be missing or damaged in any way that may prevent its resale. Products should be returned in a shipping carton or other packaging so as to protect the branded product box. Do not write on or attach any shipping labels, stickers or sticky tape to the branded product box.

Products deemed faulty will either be repaired, replaced or refunded depending upon the nature of the fault. A shipping and inspection fee may be payable if no fault is found with your product. We will include an estimate of this fee in our correspondence with you.

We endeavour to get to every claim as soon as possible, we thank you for your patience and understanding in advance.

7

6 Troubleshooting

- 1. LED strip lights do not power on.**
 - Make sure that the lights are connected properly to the power adapter, and that the power plugs are switched on.
 - Make sure you've connected the pins at the smart controller correctly, where labels on the controller and the LED are visible on the same side.
 - Check to see if there is any damage on the LED strip light.

- 2. LED strip lights cannot connect with the app .**
 - Make sure you have access to and are using the correct network ID and password.
 - Make sure the network you are trying to connect to is a 2.4GHz network.
 - Please note that this product does not support 5GHz network.

- 3. LED strip lights are not blinking during the Add Device process.**
 - Unplug the DC power and restart the pair process by pressing and holding the **RESET** button on the Smart Controller for 5~6 seconds till you see the LED strip light start to blink, then follow the app to add the device again. You need to also to check off **"Confirm indicator rapidly blink"** on the bottom of the screen before moving onto the next step.






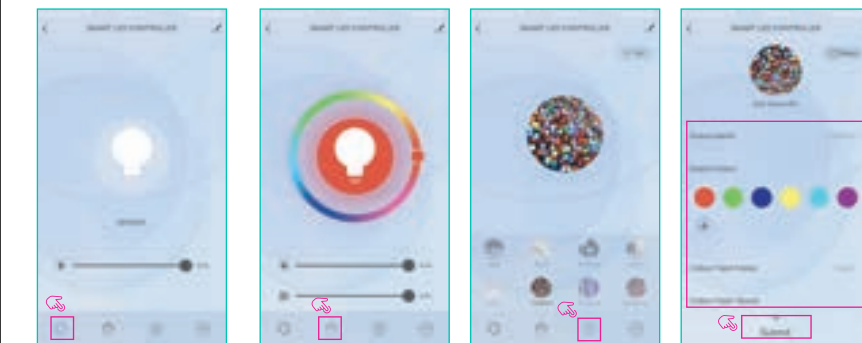
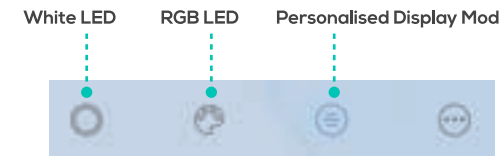
- 4. Can I install this strip lights outdoor?**
 - Although these lights are rated IP65 water proof, the DC adapter provided is not IP65 rated, thus we do not recommend using this product outdoors.

6

5 Operating the LED Strip Lights

Once you've added the LED light strip as a device, you can use the app to control your LED strip lights. There are a few ways you can control your lights:

-  **White LED**
Tap this icon to control the white LED's On/Off and brightness.
-  **RGB LED**
Tap this icon to control the RGB LED's On/Off, brightness and contrast.
-  **Personalised Display Mode**
Tap this icon to set your own personalised display mode for the LED strip lights. You can set colour, flashing mode and speed, etc. Once complete, make sure to tap the **"Submit"** button to confirm and save the changes.

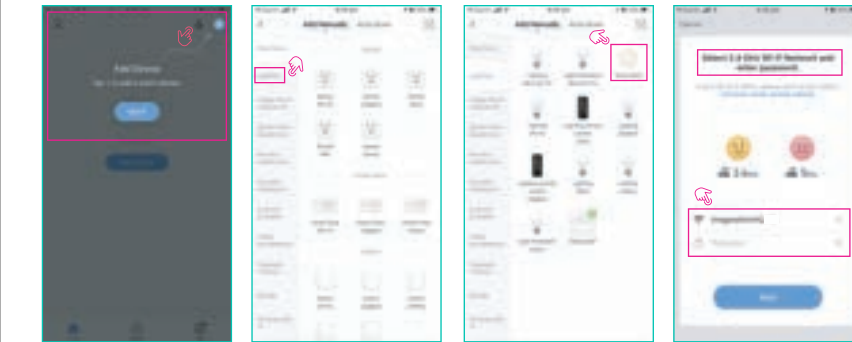


5

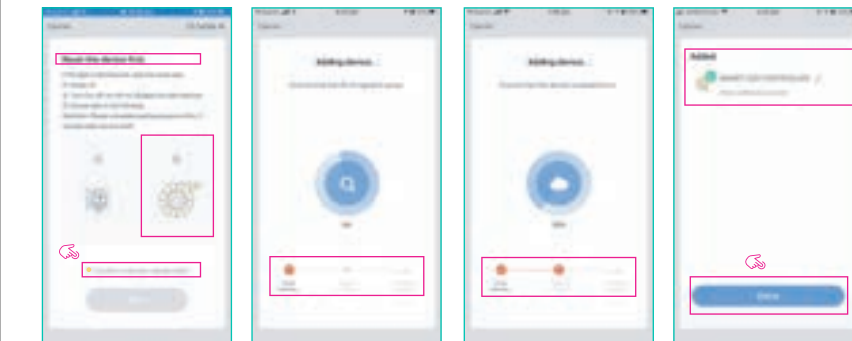
Connecting with the APP

Step 1:
Once your LED strip light is connected to power, switch it on by pressing the on/off (Reset) switch on the Smart Controller. The LED strip lights will start flashing to indicate it is ready to connect to the app.

Step 2:
Open the app and login with your account. Click on Add Device. On the left column, tap on lighting, then choose Strip Lights. Make sure to select a **2.4GHz Wi-Fi network** and enter password to connect the lights to the app.



Step 3:
Skip this step if the lights start to blink quickly. Otherwise, please press and hold the **Reset** switch on the smart controller for **5~6 seconds**. Once you can see the LED strip lights start to blink, tap **"Confirm indicator rapidly blink"**, then tap **Next** to add the device to your Wi-Fi network.



Thank you for purchasing SMART LED STRIP LIGHTS

Thank you for purchasing this genuine, quality activiva product.

Before you begin, to avoid choking hazard, please remove and safely discard or store any internal packaging material, promotional labels and protective covers fitted on the product.

When unpacking, check to see you have received all components and accessories, and check to see if there are any damage or cracks on LED strip and retain the bulky packaging for warranty returns purposes.

Please ensure the product is properly assembled or setup before use; follow the instructions provided in the manual.

We hope you enjoy your purchase as much as we did developing it.

If you have an issue with the product, warranty concerns, or other queries, please feel free to get in touch with our friendly customer support team at support@mbeat.com.au

**PLEASE READ THE INSTRUCTIONS CAREFULLY BEFORE USE.
STORE THIS MANUAL IN A SAFE PLACE FOR FUTURE REFERENCE.**

General Product Safety

- Keep this item out of reach of Children.
- Do not submerge product in water or other liquids.
- Do not use the product in the immediate surroundings of a bath, shower or swimming pool.
- Do not run the power cord near a heat source such as radiators, stoves or heaters.
- Arrange the power cord away from traffic areas to avoid a tripping hazard.
- Do not unplug the product by pulling on the power cord.
- Do not operate the product with a damaged power cord or plug, or if the product has been dropped or damaged.
- Do not route power cord under rugs/ carpets, furniture or appliances.
- Do not insert foreign objects during operation or otherwise.
- Do not place anything directly on top of the product in operation or in storage.
- Always turn off and unplug the product before moving, cleaning & maintenance, or when not in use for extended periods of time.

1 Knowing Your LED Strip Lights

Step 1:
Remove the LED strip lights from the reel, making sure that the product is in good condition, with no visible damage or cracks in it.

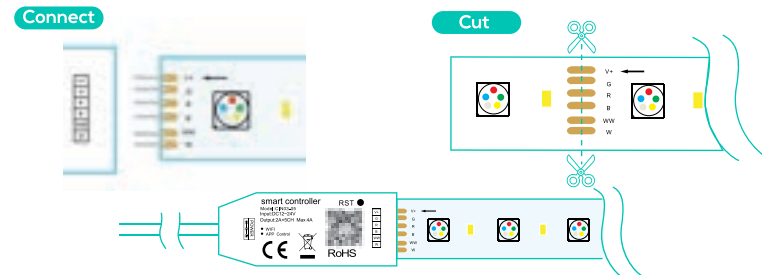
Step 2:
Your Wi-Fi smart controller looks like below:

DC Input
(Connect to DC adapter)

On/Off + Reset Switch
(Turn on/off the LED strip lights, press & hold **6 seconds** to reset Wi-Fi pairing with your network)

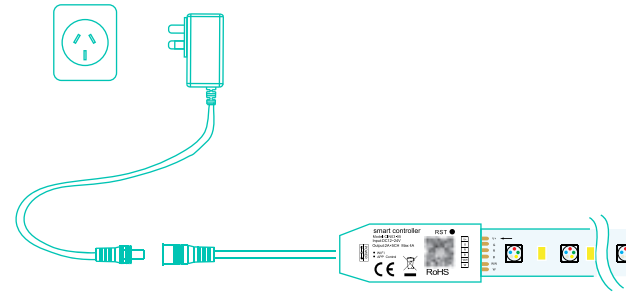
LED Strip Lights Pronged Connector
(Connect to the pins)

Step 3:
Carefully plug the LED strip light pins into their respective sockets, taking particular care to match the letter labels on the remote/LED strip. To adjust the length of the LED strip, measure out your desired length from the smart controller, and cut away the excess from the middle of the golden pins. Warning: Your excess LED strip light cannot be reconnected once cut, please make sure you are happy with the length you have chosen to discard.



2

Step 4:
Plug the DC adapter to the LED strip lights' DC power input.



Installing the LED Strip Lights

Step 1:
Clean the application surface to ensure adhesion. Gently peel away the protective tape from the product, apply LED strip carefully by securing one section before adding more.



Step 2:
Carefully connect the LED strip lights to the Smart Controller, followed by the power supply.



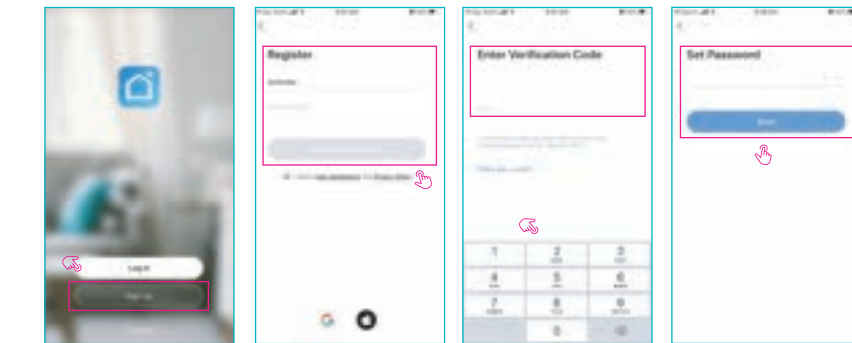
3

Installing the App

Step 1:
Download and install the app "Smart Life" on the app store or play store, or scan the QR code below to install the app.



Step 2:
Once installed, register an account in order to login and use the app.



4

activiva

Disclaimer: mbeat and the mbeat logo are trademarks of Ultra Imagination Technology Pty Ltd. All other trademarks, product names, logos, and brands are the properties of their respective owners. Product specifications are subject to change without notice. Images are for illustrative purposes only. Made in China. mbeat is not liable for damages caused by improper use of this product. © 2020 Ultra Imagination Technology Pty Ltd.