





VINTAGE USB TURNTABLE WITH BLUETOOTH SPEAKER AND AM/FM RADIO

USER MANUAL

(MB-USBTR98)

WARNING:

TO PREVENT FIRE OR SHOCK HAZARD, DO NOT EXPOSE THIS APPLIANCE TO RAIN OR MOISTURE. DO NOT REMOVE COVER. PILOT LAMPS SOLDERED IN PLACE. NO USER SERVICEABLE PARTS INSIDE. REFER SERVICING TO QUALIFIED SERVICE PERSONNEL.

 <p>The lightning flash with arrowhead symbol, within an equilateral triangle, is intended to alert user to the presence of uninsulated "dangerous voltage" within the product's enclosure that may be of sufficient magnitude to constitute risk of electric shock to persons.</p>	<p>CAUTION RISK OF ELECTRIC SHOCK DO NOT OPEN</p> <p>CAUTION: TO REDUCE THE RISK OF ELECTRIC SHOCK, DO NOT REMOVE COVER (OR BACK). NO USER SERVICEABLE PARTS INSIDE. REFER SERVICING TO QUALIFIED SERVICE PERSONNEL.</p>	 <p>The exclamation point within an equilateral triangle is intended to alert user to the presence of important operating and maintenance (servicing) instruction in the literature accompanying the appliance.</p>
--	---	--

SPECIFICATION:

Power Supply : AC adapter - DC 12V 0.5A
Poer Consumption : MAX 10W
Speed : 33 1/3 / 45 / 78 RPM
Speaker : 4Ω / 3W x 2
Replacement Needle : STYLUS - 01

DESIGN AND SPECIFICATION SUBJECT TO CHANGE WITHOUT NOTICE.

FCC STATEMENT:

1. This device complies with Part 15 of the FCC Rules. Operation is subject to the following two conditions:
(1) This device may not cause harmful interference, and
(2) This device must accept any interference received, including interference that may cause undesired operation.
2. Changes or modifications not expressly approved by the party responsible for compliance could void the user's authority to operate the equipment.

This equipment complies with FCC radiation exposure limits set forth for an uncontrolled environment. In order to avoid the possibility of exceeding the FCC radio frequency exposure limits, human proximity to the antenna shall not be less than 20cm (8 inches) during normal operation.



Table of Content

Introduction	4
Product Care	4
Product Support	4
Unpacking	4
Turntable Controls	5
Control Panel	6
Turntable Mode	7
Play 45 RPM Vinyl	7
Bluetooth Mode	7
AM/FM Radio Mode	8
Aux-in Mode	8
RCA Audio Out (Aux-out)	8
Replace Stylus	8
Record to Computer	9
Windows XP	9
Windows 7	11
MAC OS 10.6+	12
Save to Computer	13
Troubleshooting	13

Introduction

Thanks for purchasing this product from mbeat. Please read the instruction carefully before use and store in a safe place for future reference.

Product Care

- Do NOT leave vinyl record on the turntable after use.
- Return the vinyl record to its original package and store.
- Retain the tone arm to its original place after use.
- Replace the protective cap of the stylus cartridge after use.
- Close the turntable cover to avoid dust and lock it properly.
- Unplug the power cable and other cables after use.

Product Support

Looking for more help? Please visit mbeat.com.au.

Support email: support@mbeat.com.au

For your personal safety, do not attempt to open the device.

No user serviceable parts inside and warranty void if device opened.

Unpacking

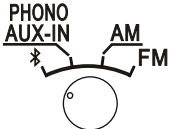

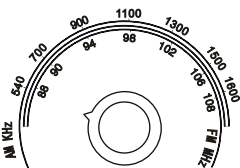
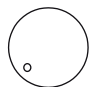

1. Remove packing material and set the unit on its end.
2. Open the lid of the unit.
3. Remove the tie-wrap from the Tone Arm
4. Remove the white stylus protective cap.
5. Release the Hold Down Clip. Unlock the Tone arm.

Turntable Controls



1. Case Cover
2. Raising Arm
3. Auto Stop
4. Vinyl Speed
5. Stylus
6. Speakers
7. Bluetooth Indicator
8. Function Switch
9. AM / FM Tuner
10. Power & Volume
11. Power Indicator
12. USB Port to PC
13. 3.5mm Audio In
14. RCA Output to External Speakers
15. Power-in (Connect to Power Adaptor)
16. Pigtail Antenna

Control Panel

 <p>A rotary switch with four positions: PHONO, AUX-IN, AM, and FM. A small circle indicates the current position.</p>	<p>Function Switch Select from following functions: 1. Bluetooth 2. Phono or Aux-in 3. AM 4. FM</p>
 <p>A small circle with a Bluetooth symbol above it.</p>	<p>Bluetooth LED Indicator Display Bluetooth connection status.</p>
 <p>A semi-circular frequency dial with two scales: AM kHz (540, 700, 900, 1100) and FM MHz (88, 90, 94, 98, 102, 106, 108, 1500, 1600). A circular knob is in the center.</p>	<p>AM / FM Tuner Tune AM/FM frequency. For better reception, please make sure the antenna is fully extended and the unit is placed in the area with strong signal.</p>
<p>VOLUME</p>  <p>A circular knob with a small circle in the center. Below it are the labels 'ON' and 'OFF'.</p>	<p>Power On/Off & Volume Turn on/off the unit and control speakers volume. To avoid sound distortion, please do not turn volume to maximum. Remember to turn the unit off when finishing playing.</p>
 <p>A small circle with a power symbol above it.</p>	<p>Power On/Off Indicator When the unit turns on, the red LED is on.</p>

Turntable Mode

1. Plug the small end of the power adaptor into your turntable.
2. Connect the big end of the power adaptor to the wall outlet.
3. Place vinyl on your turntable. Turn Function Switch to PHONO/AUX-IN mode.
4. Set the correct speed (rpm) of your vinyl record (33/45/78 rpm). For 45 rpm vinyl record, please use the 45 rpm adaptor.
5. Turn on the power of the turntable. The red light is on.
6. Move the Tone Arm to the desired starting point on the record. Now the turntable is playing.
7. Adjust speaker volume to the preferred level.


Note: If you prefer loud music, instead of maximising speakers' volume, we suggest to connect turntable to external amplified speakers, which give better loud sound performance without vibrating turntable's platter.

8. Slide the Auto Stop Control switch to choose auto stop.
9. At the end of the record, Tone Arm will stop automatically. Tone Arm must be returned to the Tone Arm Rest manually.

Play 45 RPM Vinyl

Gently place your 45 rpm record onto the turntable. Place the 45 rpm adaptor over the spindle. Follow the steps under turntable operation to play your record.

Bluetooth Mode

1. Turn Function Switch to Bluetooth () mode.
2. When the blue light starts blinking, it is ready for pairing.
3. Turn on Bluetooth setting on your phone or tablet. Start searching new Bluetooth device nearby (ID: MB-USBT98). Once blue light turns stable, it means pairing process completed. You can now play your music via Bluetooth.

AM/FM Radio Mode

1. Turn Function Switch to AM or FM mode.
2. Fully extend Pigtail Antenna and place it in area with good reception.
3. Turn AM/FM tuner to the frequency of the radio station.

Aux-in Mode

1. Connect external audio source (phone, tablet, MP3 player, etc.) to Aux-in socket at the back of the turntable. You need a 3.5mm jack audio cable to make connection.
2. Turn Function Switch to PHONO/AUX-IN mode.
3. Control music playing on your connected device.

RCA Audio Out (Aux-out)

Enable you to play back your turntable music through the external speakers. To make this connection, you need RCA cable (not included).

Replace Stylus

The turntable's stylus needs to be replaced every 3-4 months after continue playing. You can visit your retailer to buy the replacement stylus or contact us online to purchase.

Record to Computer

For installing recording software Audacity, you can use the installation CD, or download from following link:

<http://audacity.sourceforge.net/download/>

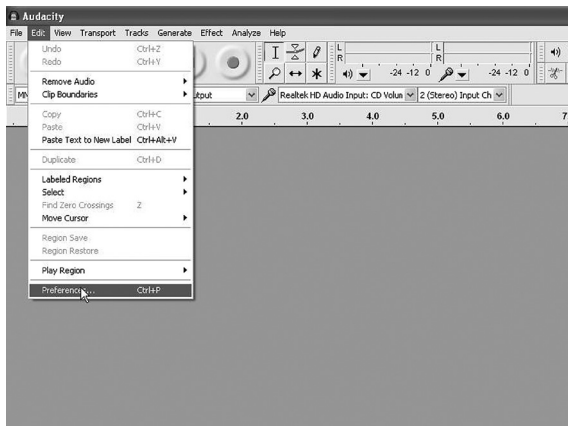
Please make sure to download the right version for your operating system.

Start to record to your PC or Mac:

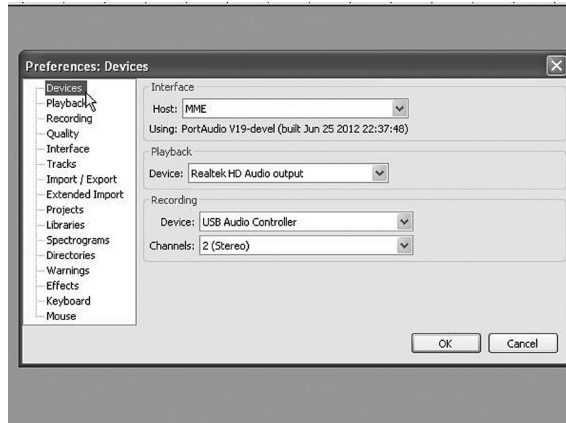
1. Place the vinyl record on the turntable.
2. Power on turntable.
3. Connect turntable to your PC or Mac via USB cable.
4. Open Audacity on your computer.
5. Refer below instructions to record under different OS.

Windows XP

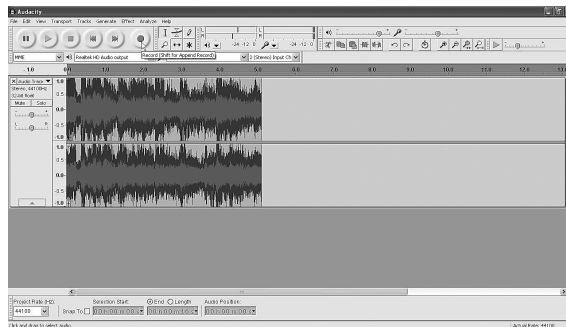
Click [Edit] then select [Preference].



Under [Devices], select [USB Audio Controller] from the list as the recording device.

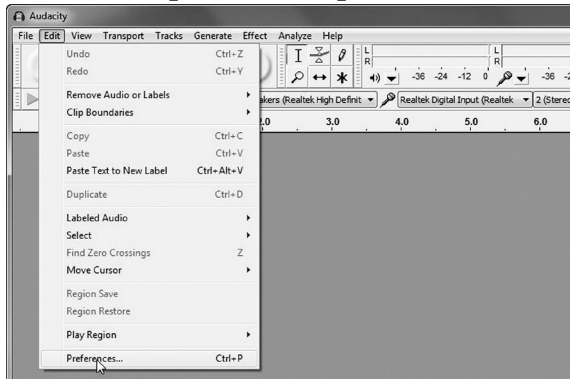


1. Click [Record] button to record.
2. Adjust record volume to the maximum level.

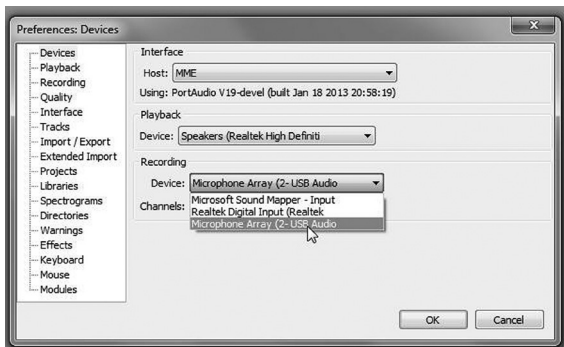


Windows 7

Click [Edit] then select [Preference].



Under [Devices], select [USB Audio Controller] from the list as the recording device.

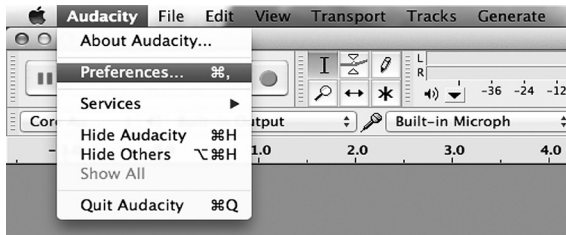


1. Click [Record] button to record.
2. Adjust record volume to the maximum level.

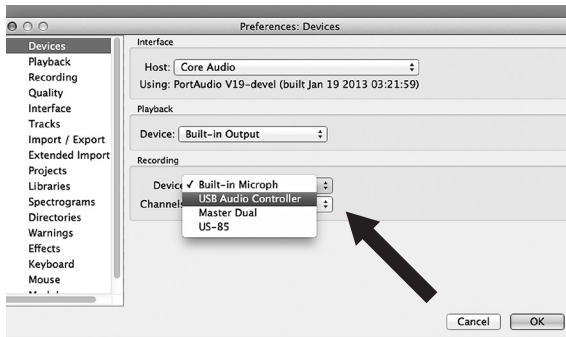


MAC OS 10.6+

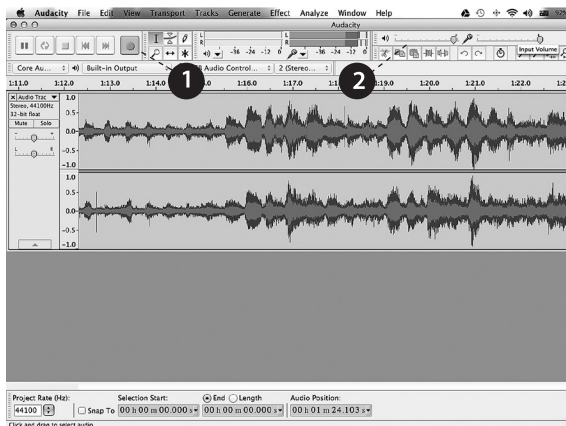
Click [Audacity] then select [Preference].



Under [Devices], select [USB Audio Controller] as the recording device.



1. Click [Record] button to record.
2. Adjust record volume to the maximum level.



Save to Computer

Click [Stop] button on Audacity to stop recording.

Click [File] - [Save] to save file on your computer.

If you like segment recording, you need to manually select the segment and save on computer. If you want to save multiple segments, please do it one by one.

Hint: Normally the beginning and the end of the track contains no sound signal, which is shown in Audacity as a flat straight line.

Troubleshooting

1. The turntable is not power on.

Please make sure that the turntable is connected to the power.

Please make sure that you turn on the Power/Volume button.

2. I can hear noise from the speaker.

Please make sure that the vinyl track is not damaged. Check if the stylus need to be replaced. Sudden noise increase or intermittent sound are the signs of worn out stylus.

3. I cannot find the USB audio device when plug it into computer.

Please refer to “Record to Computer” section and follow steps to set up Audacity preference.

4. How can I play back record music?

You can play back music using Windows Media Player, Quick Time and many other media players.

5. Need more help.

Please visit our website for further support. For more enquiries, please send email to: support@mbeat.com.au.



@ support@mbeat.com.au

f mbeat

📷 #mbeat_australia

🐦 @mbeataustralia

www.mbeat.com.au